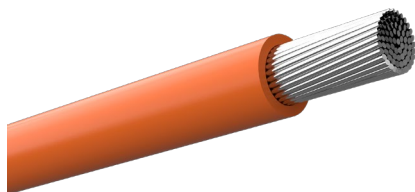


TEXILine HF90



Application:

DNV-approved single insulated 1kV cable for use in shipboard and offshore distribution panels, switchboards and power supply in buildings. TEXILine HF90 has a smooth surface and flexible tinned Cu class 5 conductor that provides excellent installation properties. Available in 12 different standard colours. Others on request.

Properties:

Temperature rating DNV	+90°C
Temperature rating UL	+105°
Voltage Rating Uo/U	0,6/1kV

Standards:

Conductor	IEC 60228,5 / UL 1581
Construction	IEC 60092-353 / UL 758
Halogen free	IEC 60754-1, -2
Smoke density	IEC 61034-1, -2
Flame retardant	IEC 60332-1-2 / FT2

Approval

DNV TAE000026Z	
CE acc 2014/35/EU	
UL 30083	1-240mm ²
CPR Eca	1-1,5mm ²
CPR Dca s2, d2, a1	2,5-240mm ²

Construction

Conductor	Class 5 flexible tinned conductor
Insulation	Halogen free, cross-linked and flame retardant special compound
Marking, Ink Print	Amokabel TEXILine HF90 <size> IEC 60092-353 1kV DNV - E164256 "UR logo" AWM <UL style> 105C "cUR logo" AWM I A 105C 1000V FT2 YYWW
Minimum bending radius, fixed installation	OD x 4
Colour	Customer specified

Conductor Cross-section	Conductor Cross-section	Number of wires approx.	Wire diameter	Nominal outer diameter	Current rating continuous load @45°C ambient DNV-RU-SHIP Pt.4 Ch.8 Sec.2 table 6	Max conductor resistance @20°C, tinned Cu	Total weight
[mm ²]	[AWG]	[pcs]	[mm]	[mm]	[A]	[Ω/km]	[kg/km]
1	18	32	<0,21	2,7	18	20,0	15
1,5	16	32	<0,26	2,9	23	13,7	20
2,5	14	54	<0,26	3,4	30	8,21	30
4	12	50	<0,31	3,9	40	5,09	45
6	10	75	<0,31	4,5	52	3,39	65
10	8	75	<0,41	5,4	72	1,95	105
16	6	118	<0,41	6,4	96	1,24	170
25	4	189	<0,41	8,1	127	0,795	260
35	2	266	<0,41	9,6	157	0,565	345
50	1	378	<0,41	11,4	196	0,393	530
70	2/0	539	<0,41	13,4	242	0,277	740
95	3/0	684	<0,41	15,0	293	0,210	990
120	4/0	570	<0,51	16,9	339	0,164	1250
150	MCM300	703	<0,51	19,1	389	0,132	1560
185	MCM350	851	<0,51	21,3	444	0,108	1930
240	MCM450	1072	<0,51	24,3	522	0,0817	2510

Current rating correction factors for ambient temp other than 45°C per DNV-RU-SHIP Pt.4 Ch.8 Sec.2 table 10