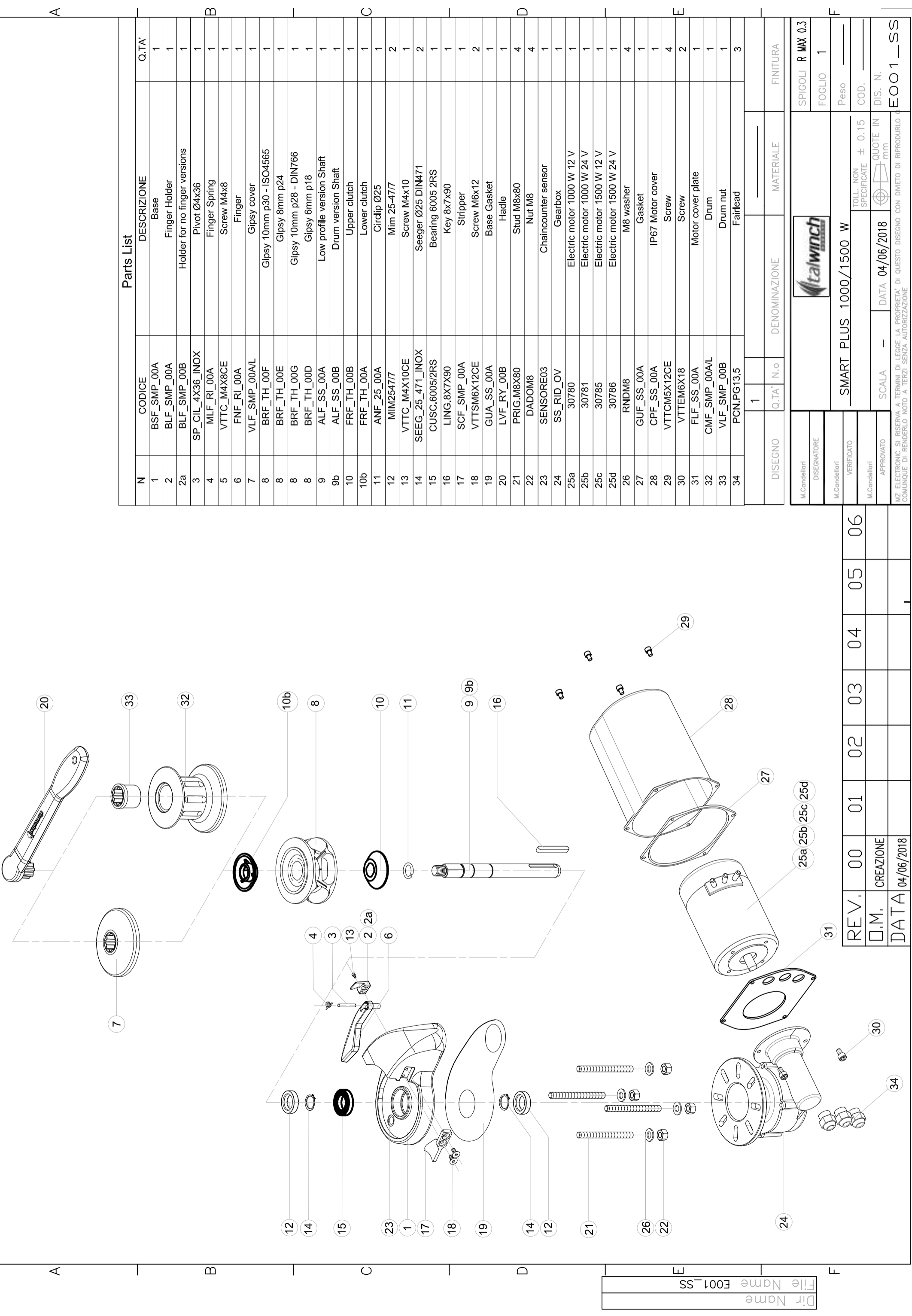


1 2 3 4 5 6 7



Parts List

N	CODICE	DESCRIZIONE	Q.TA'
1	BSF_SMP_00A	Base	1
2	BLF_SMP_00A	Finger Holder	1
2a	BLF_SMP_00B	Holder for no finger versions	1
3	SP_CIL_4X36_INOX	Pivot Ø4x36	1
4	MLF_RL_00A	Finger Spring	1
5	VTTC_M4X8CE	Screw M4x8	1
6	FNF_RL_00A	Finger	1
7	VLF_SMP_00A/L	Gipsy cover	1
8	BRF_TH_00F	Gipsy 10mm p30 - ISO4565	1
8	BRF_TH_00E	Gipsy 8mm p24	1
8	BRF_TH_00G	Gipsy 10mm p28 - DIN766	1
8	BRF_TH_00D	Gipsy 6mm p18	1
9	ALF_SS_00A	Low profile version Shaft	1
9b	ALF_SS_00B	Drum version Shaft	1
10	FRF_TH_00B	Upper clutch	1
10b	FRF_TH_00A	Lower clutch	1
11	ANF_25_00A	Circlip Ø25	1
12	MIM25477	Mim 25-477	2
13	VTTC_M4X10CE	Screw M4x10	1
14	SEEG_25_471_INOX	Seeger Ø25 DIN471	2
15	CUSC.6005/2RS	Bearing 6005 2RS	1
16	LING.8X7X90	Key 8x7x90	1
17	SCF_SMP_00A	Stripper	1
18	VTTCM6X12CE	Screw M6x12	2
19	GUA_SS_00A	Base Gasket	1
20	LVF_RY_00B	Hadle	1
21	PRIG.M8X80	Stud M8x80	4
22	DADOM8	Nut M8	4
23	SENSORE03	Chaincounter sensor	1
24	SS_RID_OV	Gearbox	1
25a	30780	Electric motor 1000 W 12 V	1
25b	30781	Electric motor 1000 W 24 V	1
25c	30785	Electric motor 1500 W 12 V	1
25d	30786	Electric motor 1500 W 24 V	1
26	RNDM8	M8 washer	4
27	GUF_SS_00A	Gasket	1
28	CPF_SS_00A	IP67 Motor cover	1
29	VTTCM5X12CE	Screw	4
30	VTTEM6X18	Screw	2
31	FLF_SS_00A	Motor cover plate	1
32	CMF_SMP_00A/L	Drum	1
33	VLF_SMP_00B	Drum nut	1
34	PCN.PG13:5	Fairlead	3

DISEGNO	Q.TA'	N.º	DENOMINAZIONE	MATERIALE	FINITURA
1					
SMART PLUS 1000/1500 W					
TOLL. NON SPECIFICATE ± 0.15					
QUOTE IN mm					
SCALA - DATA 04/06/2018					
SPIGOLI R MAX 0.3					
FOGLIO 1					
Peso					
COD.					
DIS. N.					
E001_SS					

REV.	00	01	02	03	04	05	06
D.M.	CREAZIONE						
DATA	04/06/2018						

MZ ELECTRONIC SI RISERVA A TERMINI DI LEGGE LA PROPRIETA' DI QUESTO DISEGNO CON DIVIETO DI RIPRODURLO O COMUNIQUE DI RENDERLO NOTO A TERZI SENZA AUTORIZZAZIONE

Dir Name
File Name E001_SS